

LBM41 Schedule of Modifications to the Policies Map – May 2024

- Merton’s Policies Map is not a development plan document and although the Inspectors do not have the power to recommend modifications to it, the spatial implications of Main Modification need to be captured on the Policies Map in the interests of effectiveness.
- Merton adopted Policies Map (2014) is available in the [examination library](#) as: 0D26 [Merton Sites and Policies Plan and Policies Map 2014](#).
- This schedule of modifications shows proposed modification to the [Stage 3 pre-submission draft Policies Map consulted on 22 July to 6 September \(Ref. 0D2\)](#).
- The council has also published this online map that shows, where applicable, duplicate layers to illustrate the difference between the version of the draft Policies Map as published at Stage 3 (July to September 2021) and the modifications proposed in this schedule: [Merton's Draft Policies Map](#).

Mod Ref.	Page	Plan Ref.	Proposed Changes	Reason
MM-MOL Map-01a	Map	Policies Map – Metropolitan Open Land	<i>Remove the properties at 1, 2, 2a, 3 The Cottages, Lower Morden Lane SM4 4NU from Lower Morden Metropolitan Open Land (MOL-3).</i>	This site contains 4 residential properties which do not form part of the adjoining cemetery and are physically separated. They do not meet any of the MOL criteria set out in the London Plan and officers consider that their inclusion in the MOL is an anomaly from the previous policy maps and they should be removed to correct this error. The modifications ensure that the Local Plan is ‘justified’. Refer to maps Appendix 1 for details
MM-MOL Map-01b	Map	Policies Map – Metropolitan Open Land	<i>Slight boundary amendments around the Eveline Day Nursery SW20 9NA from Lower Morden Metropolitan Open Land (MOL-3).</i>	Corrections to the MOL boundary have been made to fix a GIS cartographic error from the Regulation 19 maps where the MOL boundary did not align with the property boundaries. The modifications ensure that the Local Plan is ‘justified’. Refer to maps Appendix 1 for details
MM-MOL Map-2	Map	Policies Map – Metropolitan Open Land	<i>Amend boundary of MOL Site 2 ‘Wimbledon Park’ to be the same as it is on Merton’s adopted Policies Map 2014.</i>	Refer to paragraphs 36 and 37 of the Inspectors’ post hearings letter at INSP22 received 6th April 2023 . The Inspectors do not support the proposed boundary changes to MOL on the existing AELTC site west of Church Road. The modifications ensure that the Local Plan is ‘justified’. Refer to maps Appendix 1 for details

Mod Ref.	Page	Plan Ref.	Proposed Changes	Reason
MM-Open Space Map-02	Map	Policies Map – Open Space	<i>Remove the properties at 1, 2, 2a, 3 The Cottages, Lower Morden Lane SM4 4NU from Merton and Sutton Joint Cemetery Surrounds Open Space (M074).</i>	This site contains 4 residential properties which do not form part of the adjoining cemetery. They do not meet the Open Space criteria set out in the Merton Green Infrastructure Study 2020. Officers consider that their inclusion in the Open Space designation is an anomaly and they should be removed. The modifications ensure that the Local Plan is 'justified'. Refer to map Appendix 1 for details.
MM-Open Space Map-03	Map	Policies Map – Open Space	<i>Remove part of Tooting and Mitcham Imperial Sports Ground from Open Space (P028), in accordance with approved planning application 19/P4094.</i>	In accordance with approved Planning Application 19/P4094. This is to align with the amendment made to the MOL boundary, as per the Stage 3 Policy maps. The site was reviewed by officers prior to Stage 3 consultation; however it was left off the published map in error. The modifications ensure that the Local Plan is 'justified'. Refer to map in Appendix 1 for details.
MM-Open Space Map-04	Map	Policies Map – Open Space	<i>Remove part of the Eastfields estate site owned by Clarion Housing Group from Streatham Park Cemetery Open Space (C004).</i>	This is to align with the approved planning application 17/P1717. This change was highlighted by Clarion Housing Group through their response to the Stage 3 Local Plan consultation. The modifications ensure that the Local Plan is 'justified'. Refer to map Appendix 1 for details.
MM-Open Space Map-04	Map	Policies Map – Open Space	<i>Remove part of the Long Bolstead Recreation Ground owned by Clarion Housing Group from Long Bolstead Recreation Ground Open Space (M060).</i>	This is to align with the approved planning application 17/P1717. This change was identified by officers following the Clarion Housing Group response to the Stage 3 Local Plan consultation. The modifications ensure that the Local Plan is 'justified'. Refer to map Appendix 1 for details.
MM-SINC Map-05	Map	Policies Map – Sites of Importance for	<i>Wimbledon Park SINC (MeBI02) - An additional area of land needs to be included in this SINC as the land contains a number of veteran trees and other wildlife interest.</i>	Reviewed following Stage 3 Local Plan response (D .Dawson) and confirmed by Martin Boyle (LBM Greenspaces team).

Mod Ref.	Page	Plan Ref.	Proposed Changes	Reason
		Nature Conservation		<p>As part of the recent Wimbledon Park Lake project this land has been extensively surveyed and it holds nature conservation interest in line with the SINC designation. It is considered that the site was excluded in error.</p> <p>This change was identified through a Stage 3 Local Plan consultation response and has been confirmed with the Council's Ecologist.</p> <p>The modifications ensure that the Local Plan is 'justified'.</p> <p>Refer to map Appendix 1 for details.</p>
MM-SINC Map-06	Map	Policies Map – Sites of Importance for Nature Conservation	<i>Myrna Close SINC (MeBII10) - The SINC boundary needs to be amended in accordance with approved planning application 16/P3430.</i>	<p>In accordance with approved Planning Application 16/P3430 to reflect the residential properties that have been built and the new ecology area created on site.</p> <p>The site was reviewed by officers prior to Stage 2a consultation, however it was left off the published map in error.</p> <p>The modifications ensure that the Local Plan is 'justified'.</p> <p>Refer to map Appendix 1 for details.</p>
MM-SINC Map-06a	Map	Policies Map – Sites of Importance for Nature Conservation	<i>Morden Park SINC (MeBII11) - The SINC boundary needs to be amended to align with the details in the approved and implemented landscaping condition (9) of application 16/P0882.</i>	<p>To ensure the boundaries accurately align with approved and implemented landscaping details that include hardstanding for parking and access to an electrical substation, which are not be designated as being part of the SINC. The modifications ensure that the Local Plan is 'justified'.</p> <p>Refer to map Appendix 1 for details.</p>
MM-SINC Map-06b	Map	Policies Map – Sites of Importance for Nature Conservation	<i>Abbotsbury School Meadowlands SINC (MeBII09) - The SINC boundary needs to be amended to align with the boundary of the (S.E.N.) Brightwell Respite Care Centre, to exclude the hardstanding and facilities within the play area.</i>	<p>To ensure that the SINC boundaries accurately align with the neighbouring property boundary. The modifications ensure that the Local Plan is 'justified'.</p> <p>Refer to map Appendix 1 for details.</p>

Mod Ref.	Page	Plan Ref.	Proposed Changes	Reason
MM-Green Corridor Map-07	Map	Policies Map – Green Corridor	<i>Ridge Road to Wimbledon Park Green Corridor (GC19) - The Green Corridor boundary needs to be amended to remove part of the Thames Water site at Byegrove Road, Colliers Wood.</i>	In discussions with Thames Water officers agree that this part of the site does not meet the Green Corridor criteria and therefore should be removed from the Policies Map. Up to date site photos were provided by Thames Water following the Stage 3 submission. The modifications ensure that the Local Plan is 'justified'. Refer to map Appendix 1 for details.
MM-Green Corridor Map-07a	Map	Policies Map – Green Corridor	<i>Morden Park and Surrounds (GC10) - The Green Corridor boundary needs to be amended to align with the details in the approved and implemented landscaping condition (9) of application 16/P0882.</i>	To ensure the boundaries accurately align with approved and implemented landscaping details that include hardstanding for parking and access to an electrical substation, which are not be designated as being part of the Green Corridor. The modifications ensure that the Local Plan is 'justified'. Refer to map Appendix 1 for details.
MM-Green Corridor Map-07b	Map	Policies Map – Green Corridor	<i>Morden Park and Surrounds (GC10) - The Green corridor boundary needs to be amended to align with the boundary of the (S.E.N.) Brightwell Respite Care Centre, to exclude the hardstanding and facilities within the play area.</i>	To ensure that the Green Corridor boundaries accurately align with the neighbouring property boundary. The modifications ensure that the Local Plan is 'justified'. Refer to map Appendix 1 for details.
MM-APZs-Map-08	Map	Policies Map – Archaeological Priority Zones	<i>Removed the map showing Archaeological Priority Zones from the Policies Map.</i>	For accuracy and to ensure that the Local Plan is 'justified', this data has been removed because it has been superseded by Archaeological Priority Areas according to the latest information from Historic England.
MM-Conservation Areas-Map-09	Map	Policies Map Conservation Areas	<i>Added labels to the map showing the Conservation Area codes and also a table below the legend with the name of each of the Conservation Areas</i>	For clarity and to ensure the Local Plan is "justified", the Conservation Areas map has been labelled. Refer to map Appendix 1 for details.
MM-Listed Buildings-Map-10	Map	Policies Map Listed Buildings	<i>Updated to provide the latest information.</i>	For accuracy this map has been updated with the latest information from Historic England. This modification ensures that the Local Plan is "justified"

Mod Ref.	Page	Plan Ref.	Proposed Changes	Reason
MM- Locally Listed Buildings-Map-11	Map	Policies Map Locally Listed Buildings	<i>Updated to provide the latest information.</i>	For accuracy this map has been updated with the latest information from Merton Council. This modification ensures that the Local Plan is “justified”. Refer to map Appendix 1 for details.
MM- Wandle Trail/ National Cycle Network Route 20 (NCN20)- Map-12	Map	Policies Map Wandle Trail/ National Cycle Network Route 20 (NCN20)	<i>New map to highlight the cycle routes that are part of the Wandle Trail</i>	For clarity the cycle network that is part of the Wandle Trail has been added as a separate map to highlight its importance in enabling active travel choices. This change was requested at the Stage 3 consultation from the Wandle Valley Forum. The name of the map has also been updated to improve clarity. Refer to map Appendix 1 for details.
MM- Wandle Trail proposed “missing link” route- Map-13	Map	Policies Map - New map Wandle Trail proposed “missing link” route -Map13	<i>Cycle network routes have been updated to show the Wandle Missing Link</i>	For accuracy and to ensure that the Local Plan is ‘justified’, the cycle network map has been updated to reflect the latest agreement on the Wandle Missing Link on the borough boundary between Merton and Wandsworth. The name of the map has also been updated to improve clarity. Refer to map Appendix 1 for details.
MM- Neighbourhood Parade Map-14	Map	Policies Map – Neighbourhood Parade	<i>Neighbourhood Parade at 211-219 Manor Road - The Neighbourhood Parade boundary needs to be amended to correct a drafting error and display all the properties as listed in Table 13.5b ‘Neighbourhood Parades in Merton’, i.e. 211 Manor Road is to be shown to be within the Neighbourhood Parade.</i>	To improve accuracy, effectiveness, and ensure that the Local Plan is ‘justified’. Refer to map Appendix 1 for details.
MM- Neighbourhood Parade Map-15	Map	Policies Map – Neighbourhood Parade	<i>Neighbourhood Parade at 172b - 196– 172B Streatham Road - The Neighbourhood Parade boundary needs to be amended to correct a drafting error and display all the properties as listed</i>	To improve accuracy, effectiveness, and ensure that the Local Plan is ‘justified’. Refer to map Appendix 1 for details.



Mod Ref.	Page	Plan Ref.	Proposed Changes	Reason
			<i>in Table 13.5b 'Neighbourhood Parades in Merton', i.e. 196 Streatham Road is to be shown to be within the Neighbourhood Parade.</i>	
MM-Site Allocation Map-16	Map	Policies Map – Site Allocations	<i>Site Allocation Mo5 Morden Medical Centre – change the boundary line location at the southeastern corner of the site, to ensure that the whole of the eastern site boundary aligns with the parts of Morden Road that are designated as 'TfL Red Route'.</i>	To improve accuracy and effectiveness. Refer to map Appendix 1 for details.
MM-Site Allocation Map-17	Map	Policies Map – Site Allocations	<i>Site Allocation Wi3 All England Lawn Tennis Club – amend boundary to exclude any parts on Wimbledon Park and therefore only include the portions to the west of Church Road.</i>	To ensure the plan is effective and consistent with national policy. Refer to map Appendix 1 for details.
MM-SAC Map	Map	Policies Map – new map	<i>New map to show extent of Special Area of Conservation(SAC) on Wimbledon Common</i>	To improve clarity and ensure that the extent of the SAC, which is referred to in Policy O15.3, is shown on the Policies Map. Refer to map Appendix 1 for details.

Appendix 1 – mapping changes



MM-MOL-Map-01b

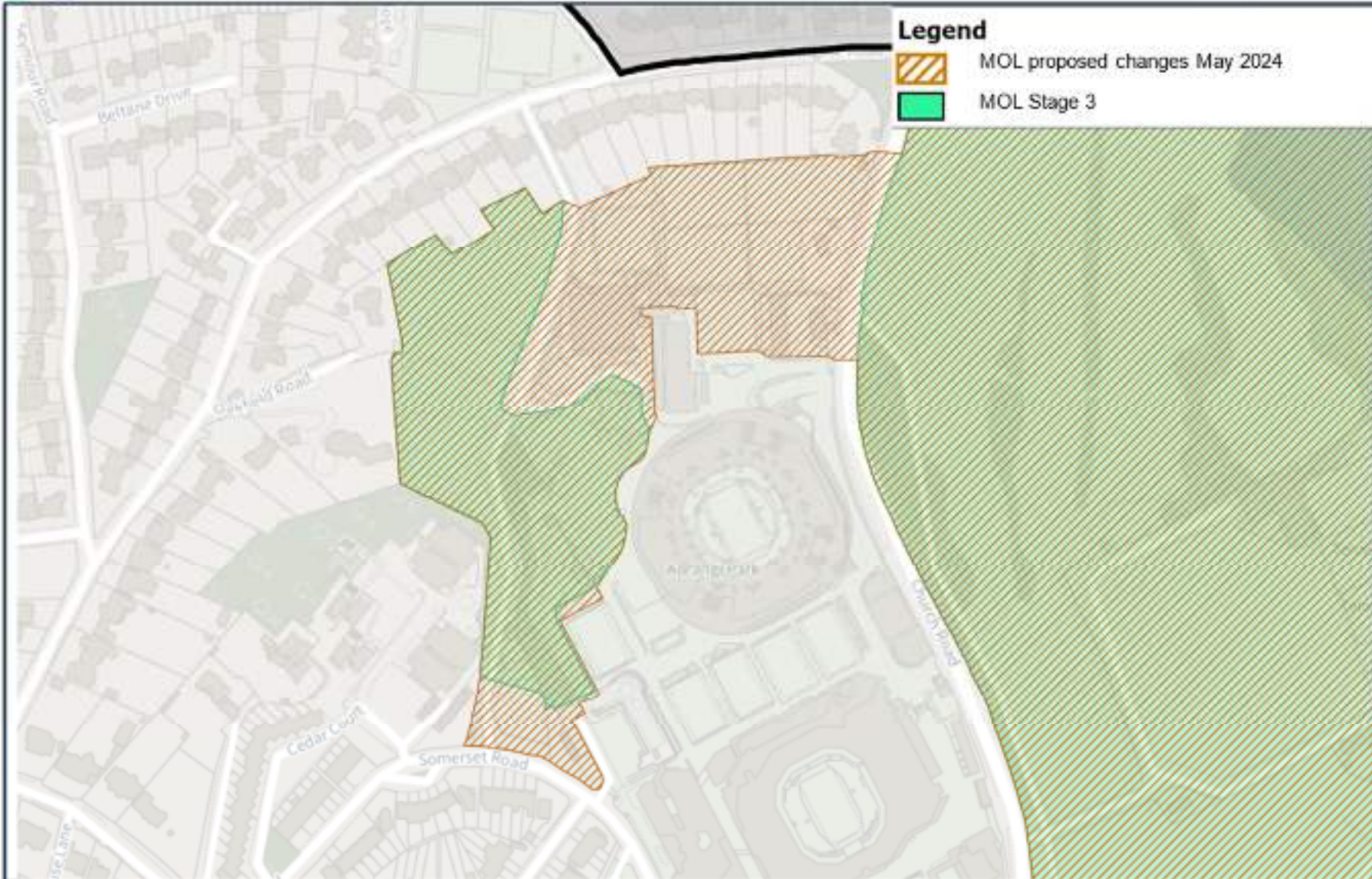


-  MQL Stage 3
-  MQL Submission

Contains OS data © Crown copyright [and database rights] (2021) OS (100019259)



MM-MOL Map-2





Contains OS data © Crown copyright [and database rights] (2021) OS (100019259)



Contains OS data © Crown copyright [and database rights] (2021) OS (100019259)







Contains OS data © Crown copyright [and database rights] (2021) OS (100019259)



MM-SINC-Map-05



-  SINC's Stage 3
-  SINC's Submission

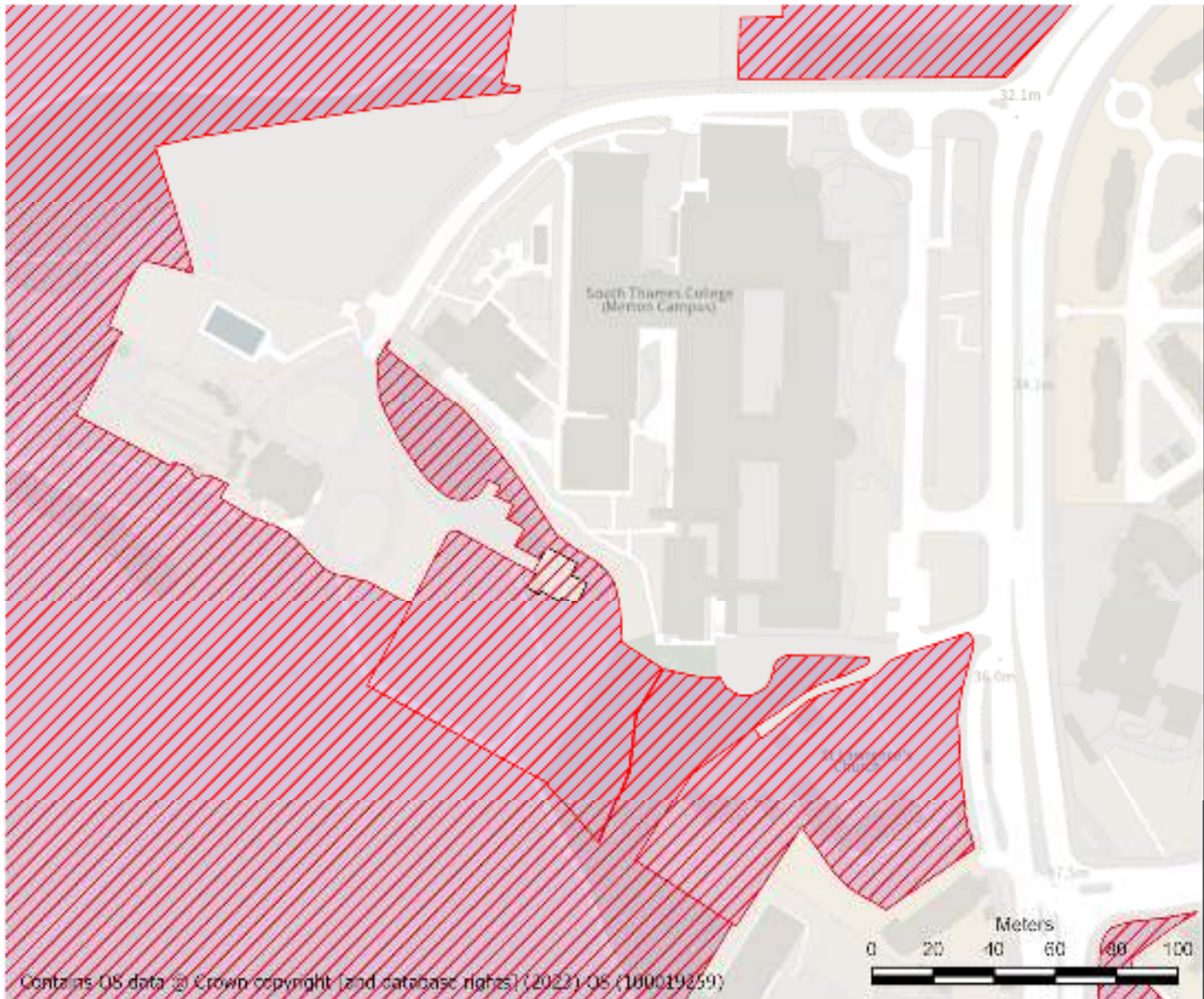
Contains OS data © Crown copyright (and database rights) (2021) OS (100019259)





Contains OS data © Crown copyright [and database rights] (2021) OS (100019259)





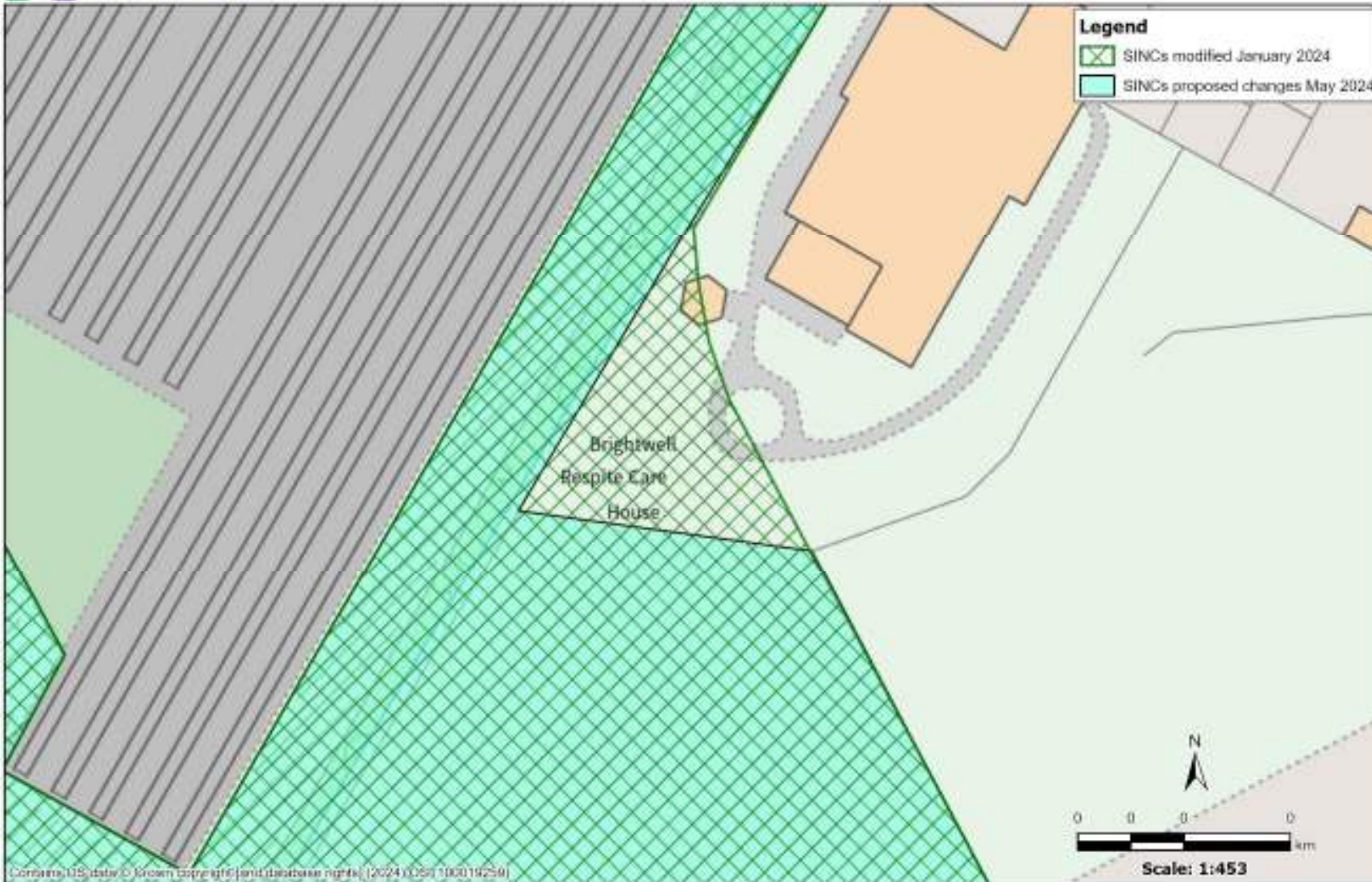
**MM-SINC
Map-06a**

Legend

-  Sites of Importance for Nature Conservation (SINCs) (published July 2021)
-  Sites of Importance for Nature Conservation (SINCs) modified July 2023



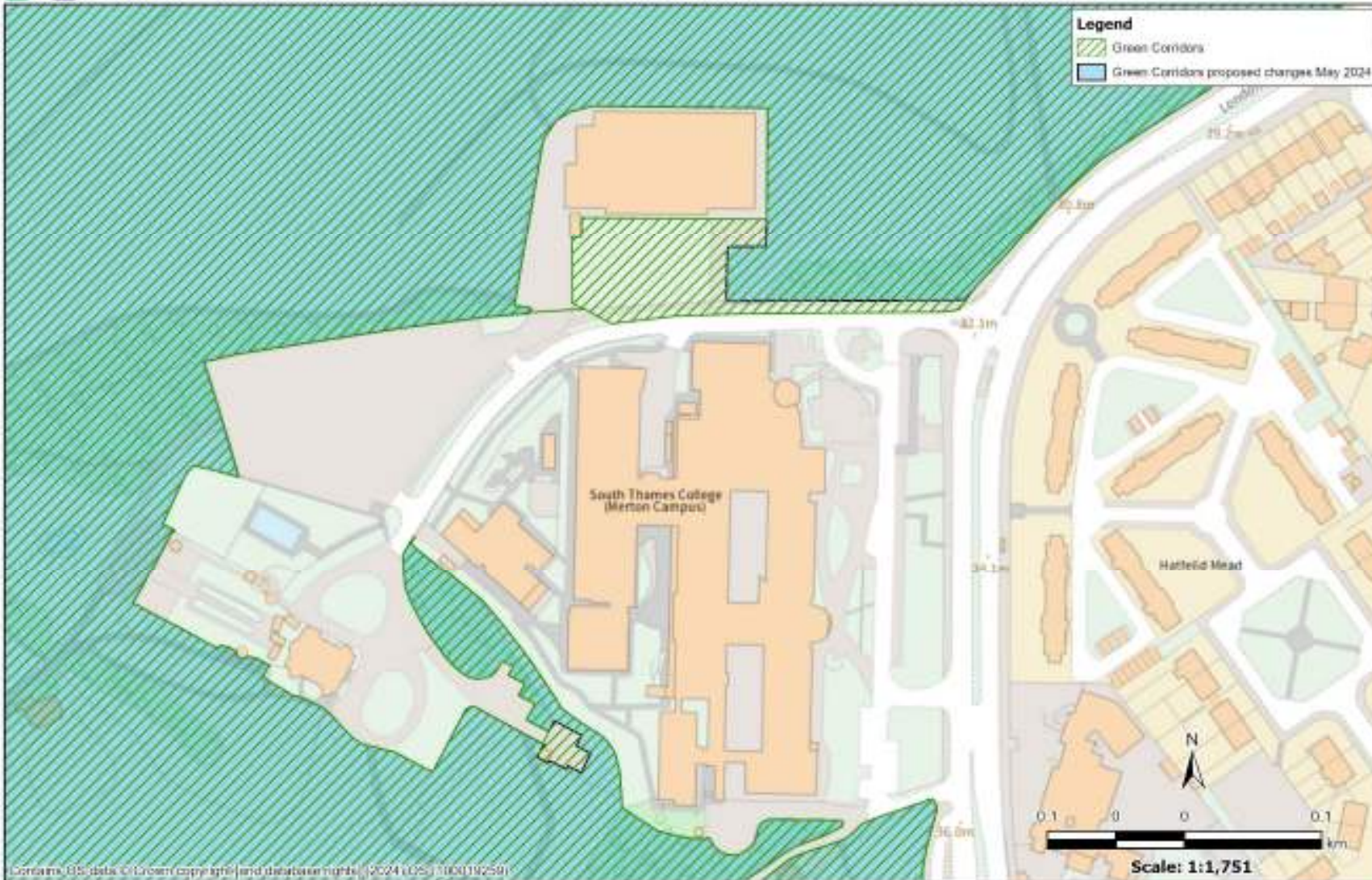
Contains OS data © Crown copyright (and database rights) (2023) OS (100019859)





Contains OS data © Crown copyright (and database rights) (2021) OS (100019259)

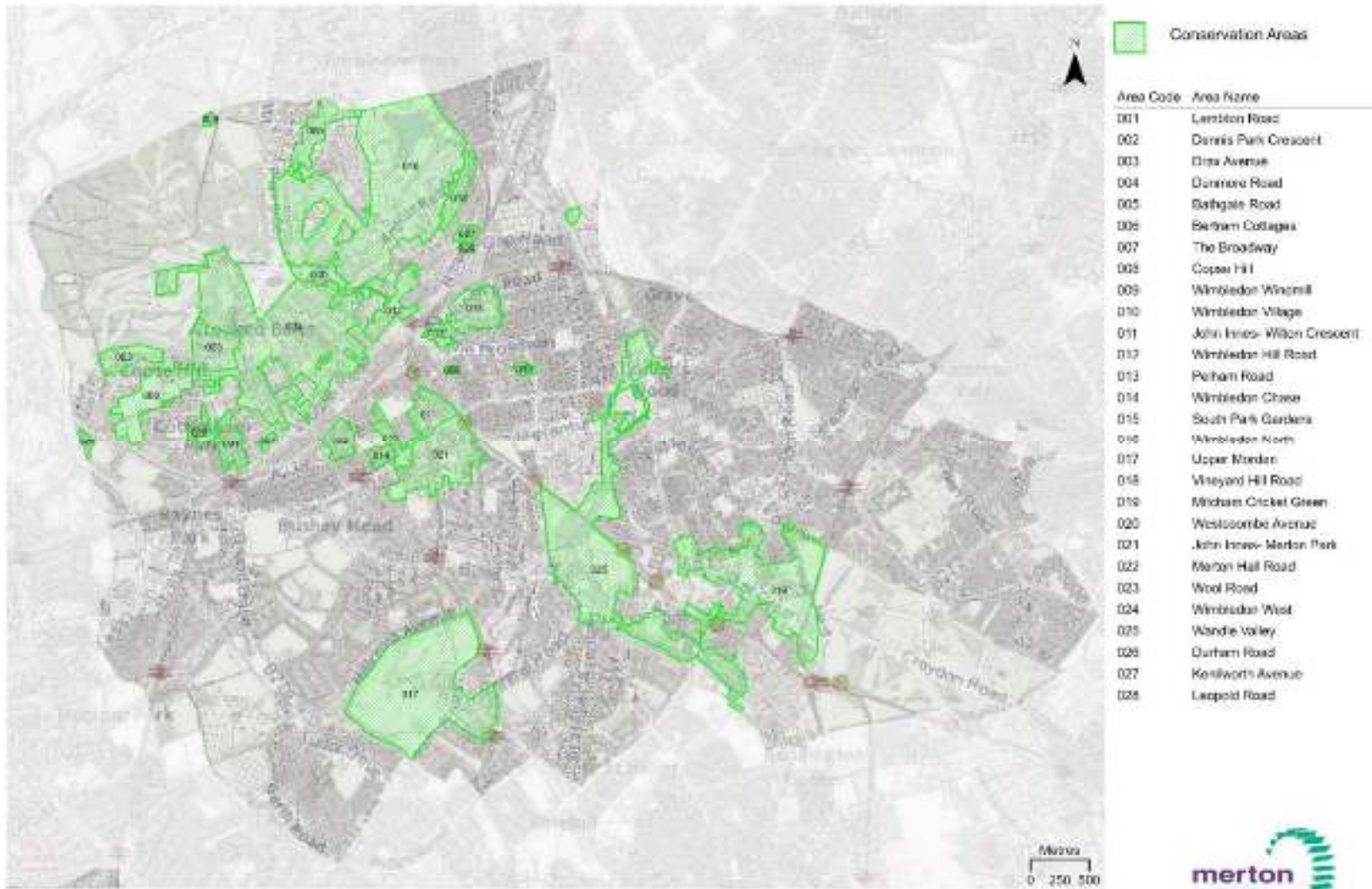
MM-Green Corridor Map-07a



MM-Green Corridor Map-07b



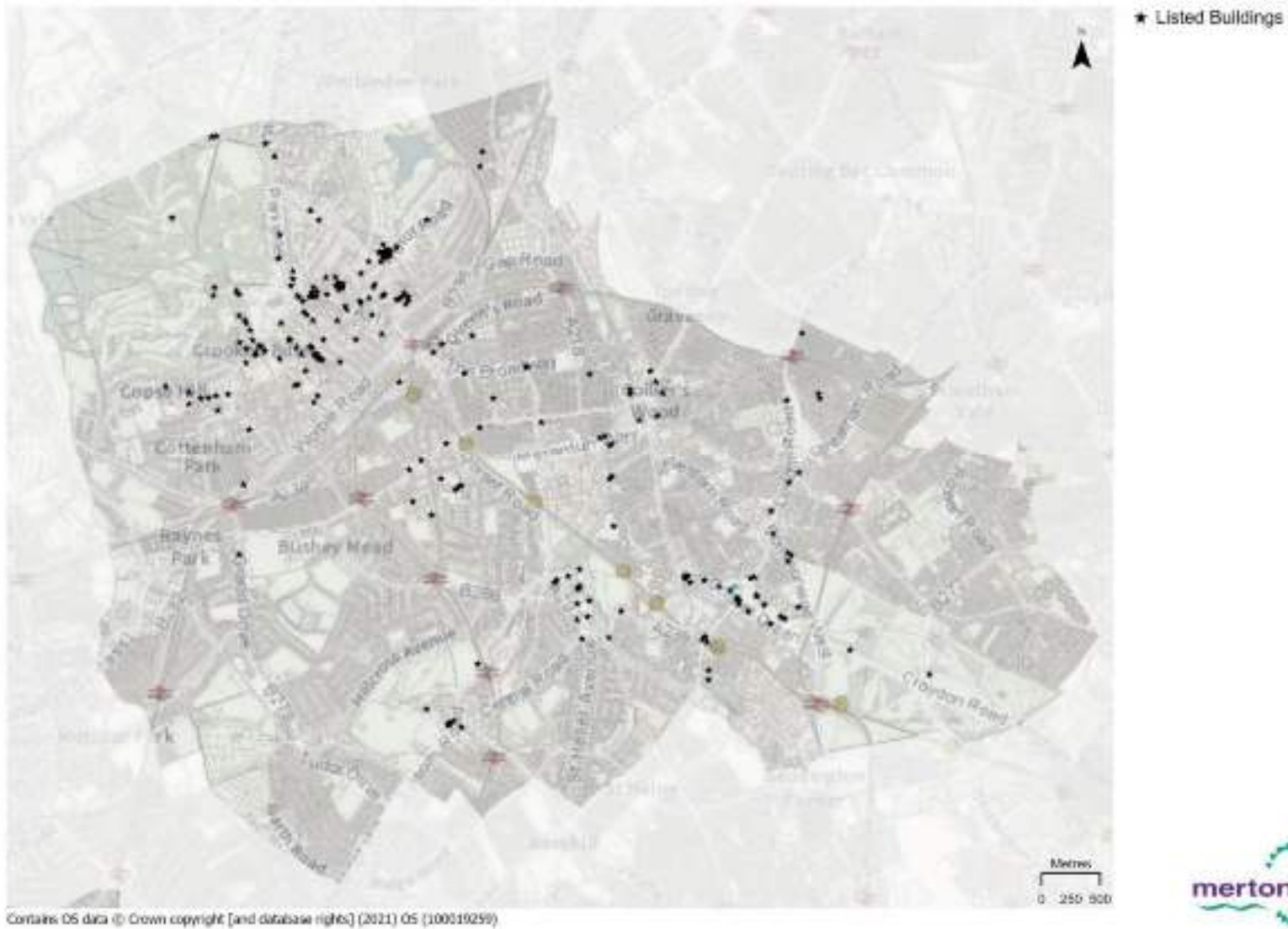
MM-Conservation Areas-Map-09



Contains OS data © Crown copyright [and database rights] (2021) OS (100019250)



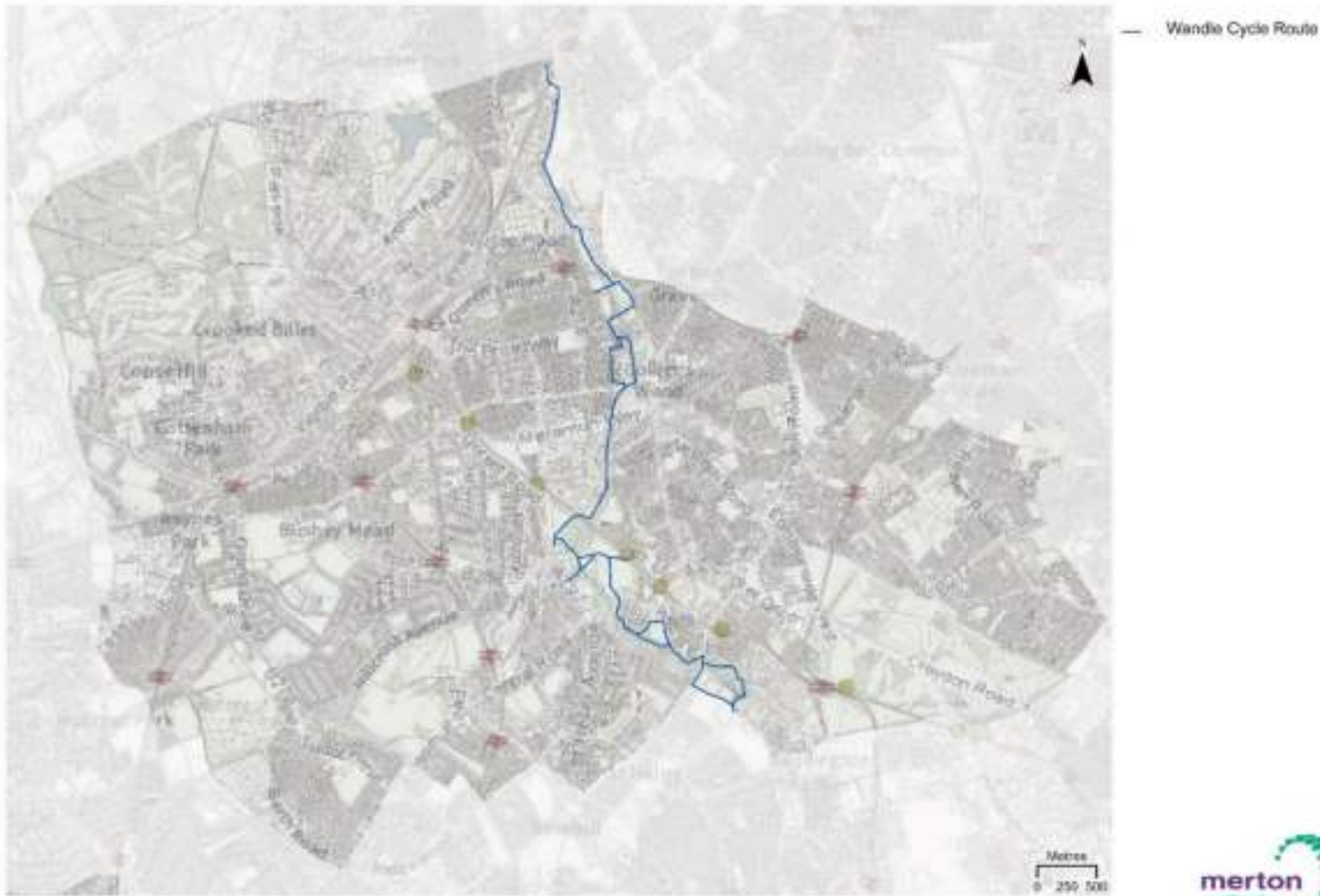
MM-Listed Buildings-Map-10



MM-Locally Listed Buildings-Map-11



MM-Wandle Trail/ Cycle Network Route 20 (NCN20)-Map-12



Contains OS data © Crown copyright [and database rights] (2021) OS (100019259)



MM-Wandle Trail proposed 'missing link' route-Map-13





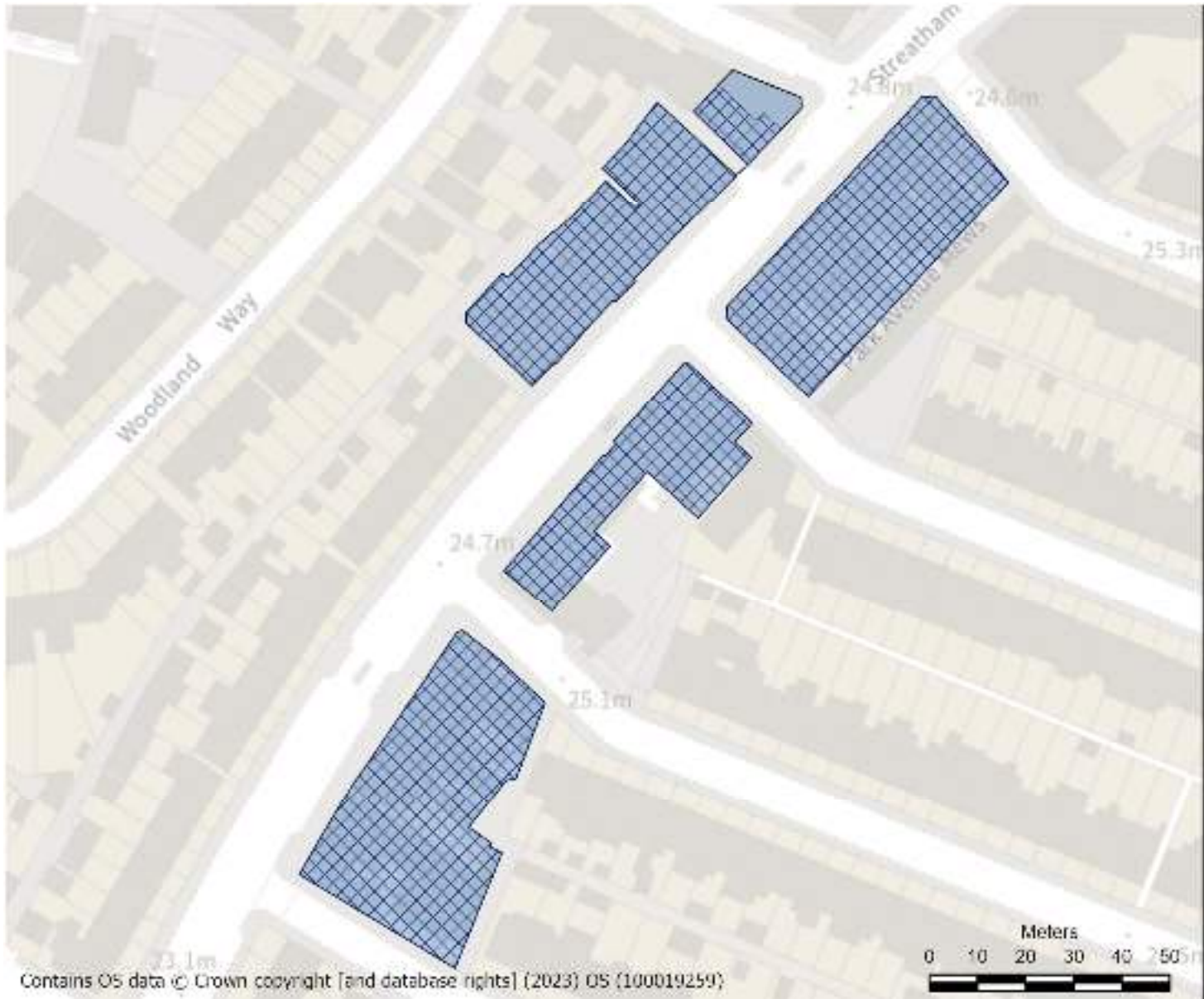
MM-
Neighbourhood
Parade Map-14

Legend

-  Neighbourhood Parades (Published July 2021)
-  Neighbourhood Parades July 2023

Contains OS data © Crown copyright [and database rights] (2023) OS (100019259)





**MM-
Neighbourhood
Parade Map-15**

Legend

-  Neighbourhood Parades (Published July 2023)
-  Neighbourhood Parades July 2023

Contains OS data © Crown copyright [and database rights] (2023) OS (100019259)



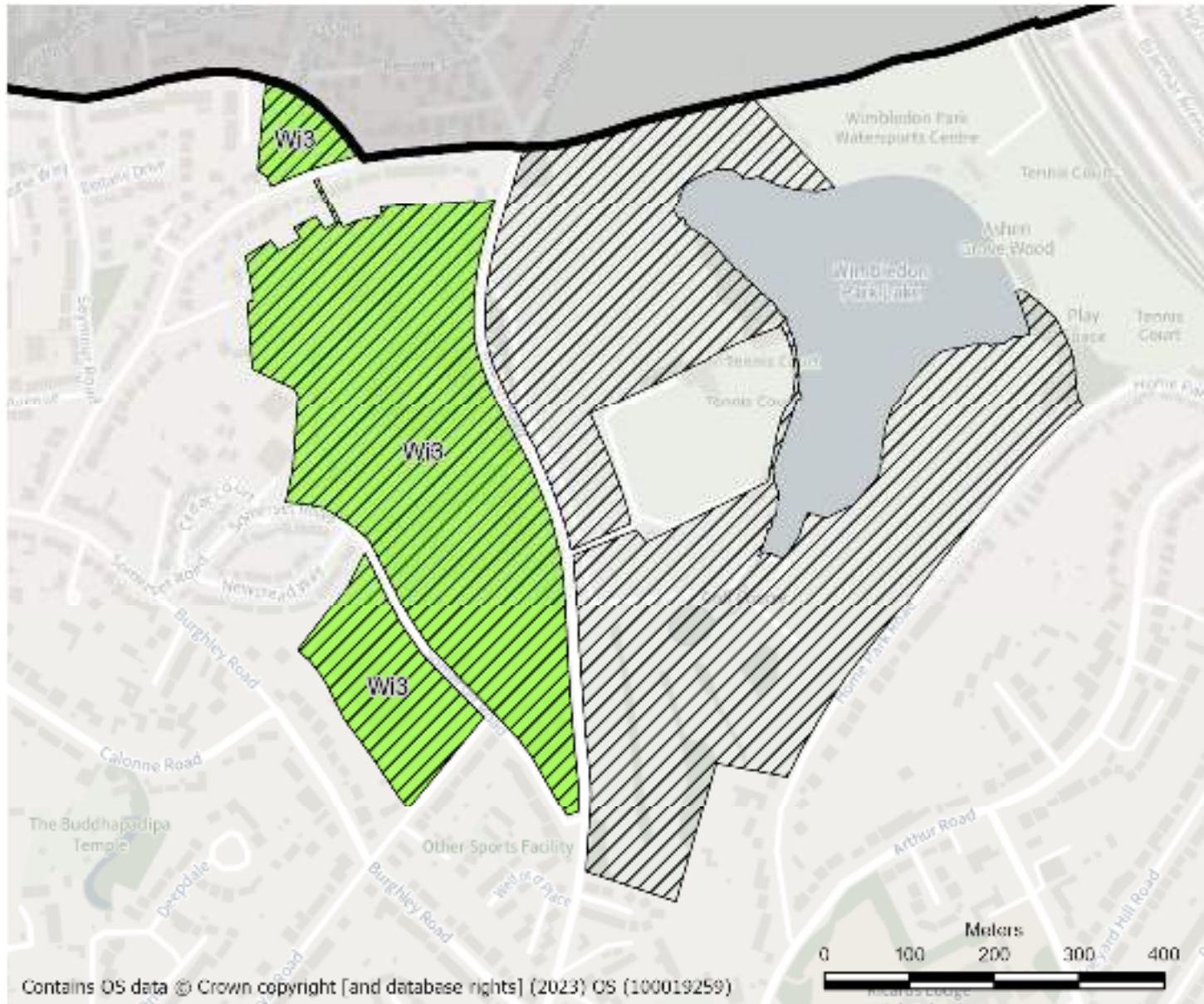
MM-Site Allocation Map-16

Legend

-  Site Allocations (Published July 2021)
-  Site Allocations Modified July 2023

Contains OS data © Crown copyright and database rights (2023) OS 100019250





MM-Site Allocation Map-17

Legend

-  Merton Borough Boundary
-  Site Allocations (Published July 2021)
-  Site Allocations Modified July 2023

Contains OS data © Crown copyright [and database rights] (2023) OS (100019259)



MM-SAC Map

